

# pathways to participation



There are many ways to be a girl scout.

Today we are going to **DISCOVER** what pathways are.

**CONNECT** pathways to the Girl Scout Leadership Experience (GSLE).

And talk about ways we can **TAKE ACTION** towards our goal of making Girl Scouts available to every girl.



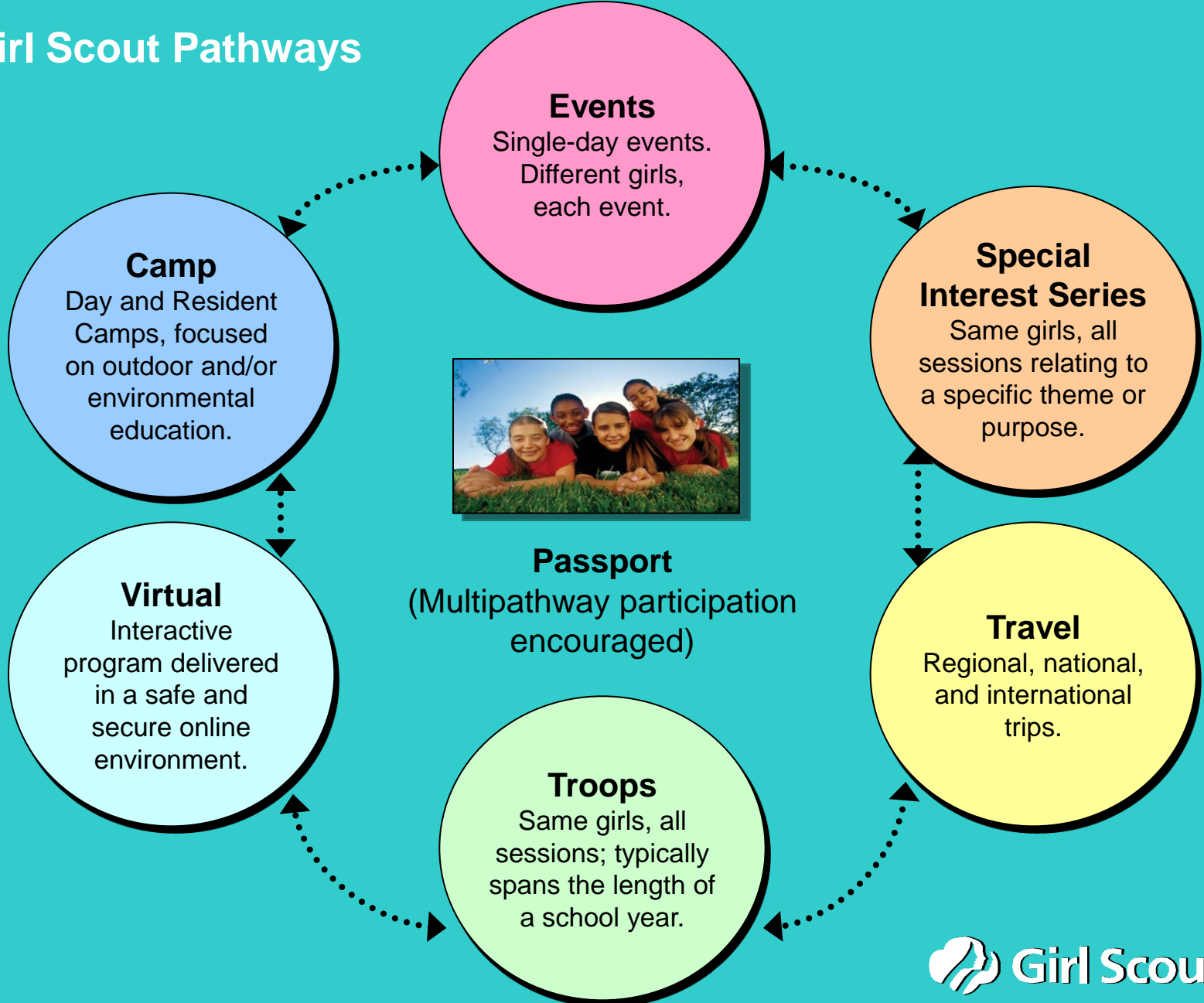
discover } pathways

## Pathways to Participation



A **pathway** is how girls and adults participate in Girl Scouting - how they belong.

# Girl Scout Pathways





connect } pathways

# connect pathways with the Girl Scout Leadership Experience

**Girls move in and out of different pathways -  
troops, camp, events, special interest series, etc.  
and remain Girl Scouts.**

**Every Girl Scout is a “Real” Girl Scout  
because she engages in and benefits from the  
Leadership Experience.**

FOCUS OF  
GIRL SCOUT  
ACTIVITIES

**Discover  
Connect  
Take Action**

GIRL SCOUT  
PROCESSES

**Girl Led  
Learning by Doing  
Cooperative Learning**

15 SHORT-TERM  
AND INTERMEDIATE  
OUTCOMES

**Girls gain specific  
knowledge, skills,  
attitudes, behaviors,  
and values in  
Girl Scouting.**

LONG-TERM OUTCOME

**Girls lead with  
courage, confidence,  
and character  
to make the world  
a better place.**

# Discover



# Connect



# Take Action



# Leadership

## THE 15 OUTCOMES OF THE NEW GIRL SCOUT LEADERSHIP EXPERIENCE

- 1 Girls develop a strong sense of self.
- 2 Girls develop positive values.
- 3 Girls gain practical life skills.
- 4 Girls seek challenges in the world.
- 5 Girls develop critical thinking.

- 1 Girls develop healthy relationships.
- 2 Girls promote cooperation and team building.
- 3 Girls can resolve conflicts.
- 4 Girls advance diversity in a multicultural world.
- 5 Girls feel connected to their communities, locally and globally.

- 1 Girls can identify community needs.
- 2 Girls are resourceful problem solvers.
- 3 Girls advocate for themselves and others, locally and globally.
- 4 Girls educate and inspire others to act.
- 5 Girls feel empowered to make a difference in the world.



| Grades |   |   |      |         |        |        |   |   |        |    |    |    |
|--------|---|---|------|---------|--------|--------|---|---|--------|----|----|----|
| K      | 1 | 2 | 3    | 4       | 5      | 6      | 7 | 8 | 9      | 10 | 11 | 12 |
| Troop  |   |   |      |         |        |        |   |   |        |    |    |    |
|        |   |   | Camp |         |        |        |   |   |        |    |    |    |
|        |   |   |      |         | Series |        |   |   |        |    |    |    |
|        |   |   |      |         |        |        |   |   | Events |    |    |    |
|        |   |   |      |         |        | Travel |   |   |        |    |    |    |
|        |   |   |      | Virtual |        |        |   |   |        |    |    |    |

## A quality Girl Scouts Leadership Experience (GSLE) will

- Engage girls from all backgrounds in grades K-12
- Serve every girl over the longest duration
- Offer flexible ways for girls to belong
- Align volunteers to support girls' participation
- Reach the greatest number of girls possible



take action } pathways